

## Installing WinWeef

The WinWeef10 weaving program is available for download as a Windows installation file via [www.winweef.nl](http://www.winweef.nl).

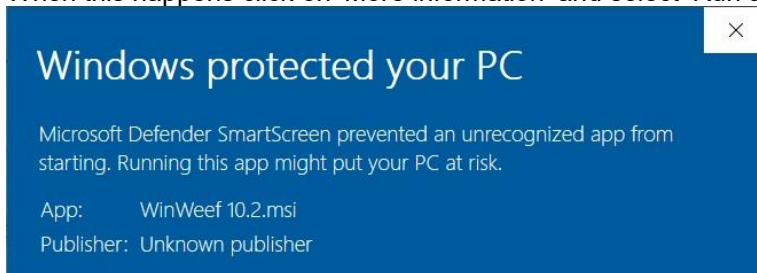
- 1) When on [www.winweef.nl](http://www.winweef.nl) click on 'Download' on the right-hand side of the site. Select 'download winweef10.3' and click on 'WinWeef10.3.msi' so that the installation file is saved in the 'Downloads' folder on your pc.



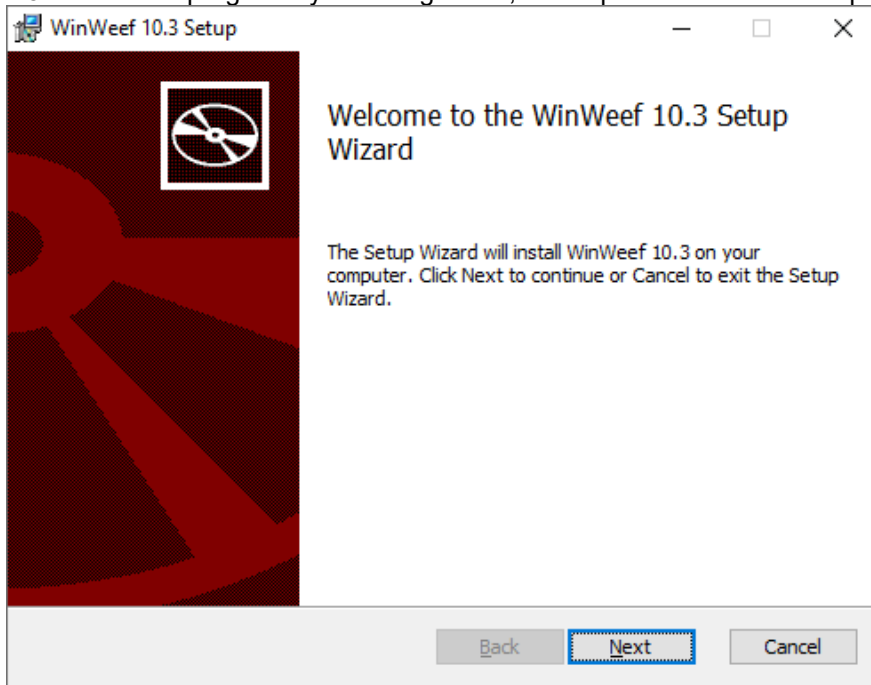
- 2) Open the 'Downloads' file and double-click on 'WinWeef10.3.msi'.
- 3) It is possible that a warning pops up about starting an 'unknown app'.




- 4) When this happens click on 'More information' and select 'Run anyway'.




- 5) Now install the program by selecting 'Next', 'I accept' and 'Finish' when prompted.



- 6) When starting WinWeef for the First time and after having purchased a license, enter the name on the license. The code will be asked in the next screen. Having done this, WinWeef will be fully functional and the entered name will be added to the titles of the drafts both in the program and on the prints.

 WinWeef 10.3 Draft by Kees Kraamer - [Unnamed]

- 7) For a WinWeef demo version, leave the field asking for a name blank.

 WinWeef 10.3 Demo version - [Unnamed]

- 8) With the demo version, it is not possible to save or print any drafts, and the Louët-interface will not be functional. In addition a pop-up reminding will appear, that it is the demo version of the program. To activate the full version from the demo version, go to Help, click on WinWeef, and enter the name and code.

Find the manual for WinWeef and 'WinWeef in practice' in the folder where WinWeef is installed. These are in PDF form and printable.

The advantage of this is that (depending on what the available printer can do) it is possible to print in color or black and white, single or double sided, with 1, 2 or 4 pages per sheet or in mini-book form.

WinWeef10 requires, due to the print preview, that a printer is installed in Windows.

For example, when working on a laptop in which a printer is not yet known in Windows, select any printer with 'Start', 'Settings', 'Printers and Faxes', 'Add a printer', and so on.

#### [Questions?](#)

For all questions and / or suggestions, please write to [info@winweef.nl](mailto:info@winweef.nl).